

ASSEMBLY AND INSTRUCTION MANUAL MODEL OD0318 BABOO

© 2018 KURT BEIER & KATI QUINGER



Motorised functional back
and footrest,
head flap, manual



360° rotary function

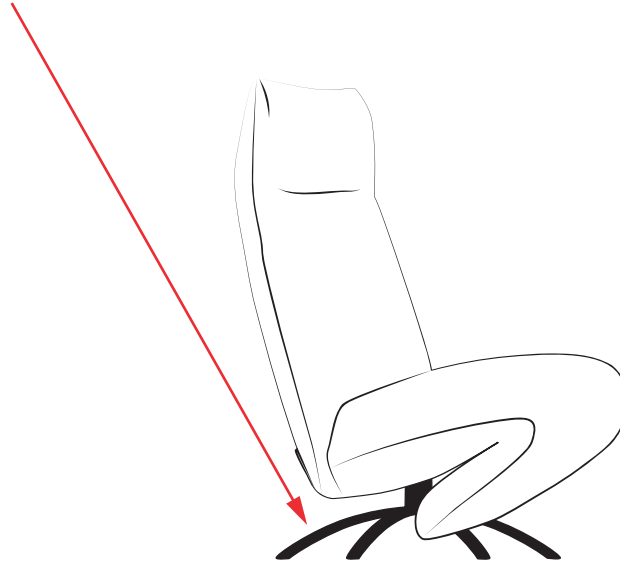


Pocket for remote control

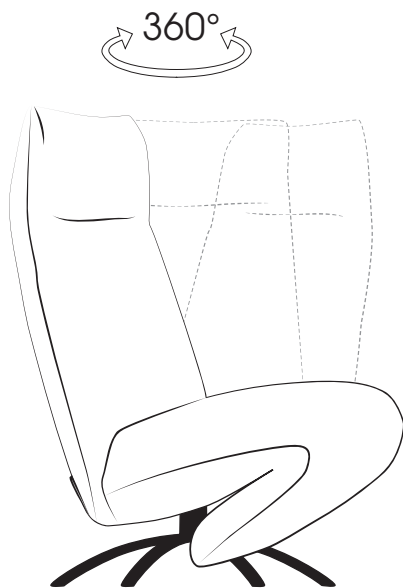
Attention! Safety note:

The cross frame is plugged into a conical turning spindle.

For transportation it is absolutely necessary to lift up the chair at the cross frame.

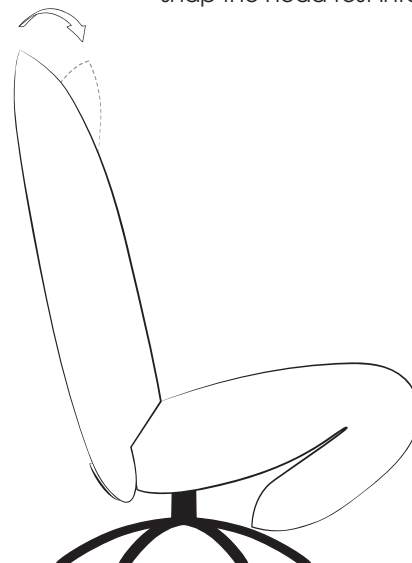


360° rotary function:



Adjustment of head-rest:

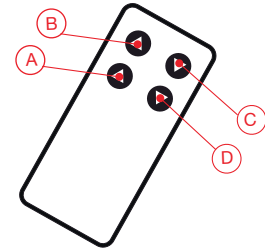
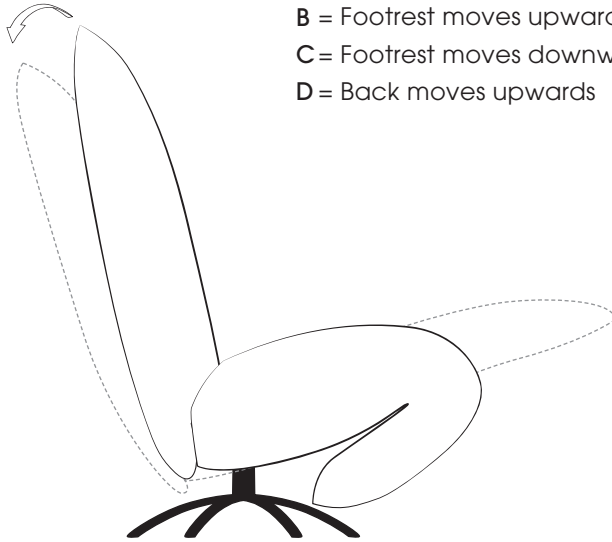
1. To adjust the desired position grip the head-rest from the outside and pull it carefully towards yourself.
2. To obtain zero position pull the head-rest carefully beyond the top position towards yourself and fold it down into zero position.
3. From zero position you can easily snap the head-rest into desired position.



Motorised back and footrest adjustment:

Sitting and reclining function: The individual sitting or reclining functions are operated via the remote control.

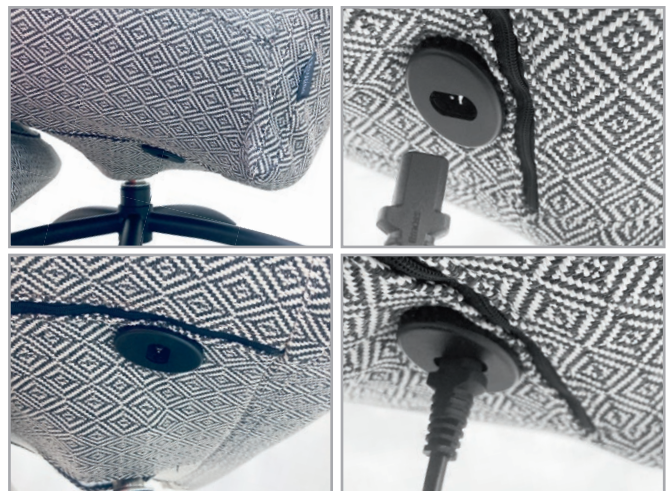
- A = Back moves backwards
- B = Footrest moves upwards
- C = Footrest moves downwards
- D = Back moves upwards



Wireless remote control:
Warning of magnetic field.

Attention!

The charging socket is always located at the right side (with view from the front).



Motorised seat adjustment - Programming of transmitter and receiver

Delivery condition: already synchronised

November 2021



Wireless remote control:
Warning of magnetic field.

Brief instruction, Pairing-Method:

Should a new start-up of remote control be necessary the wireless communication with the control/motor must be established. Proceed as follows:

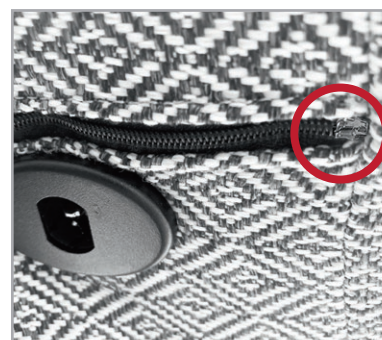
Attention: The furniture should always be lifted/tilt over by two people!



Receiver

The receiver is located on the right-hand side under the cover (with view from the front).

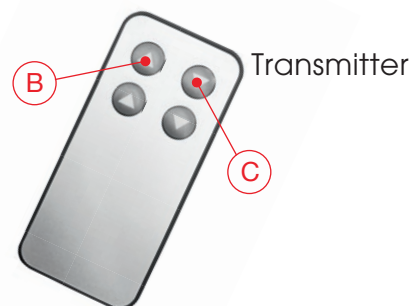
Tilt the armchair on the left side. Use a suitable support to avoid damaging the cover or the floor.



Open the zip underneath the armchair.

The receiver is located inside of the armchair.

Programming of transmitter and receiver:



1. Press pairing buttons A at receiver 2 x until the LED indicates. The pairing process is active for about 10 seconds.

2. Press simultaneous button B and C at the transmitter until the green LED at the receiver vanishes. This confirms a successful pairing process.

Note: For the pairing process the distance between transmitter and receiver should be less than 2 metres.

The programming is completed, the transmitter is now ready for operation. If the motor doesn't start while pressing, release the button and press again. If necessary retry the process.



Put drive systems into operation successively, **don't** operate several systems simultaneous. Otherwise the remote control cannot be assigned clearly by control/motor.

Technical data – for armchairs with motor-driven seat adjustment

Electrical connection

To be connected to common household alternating current (AC) with an input voltage of up to 240 V. To ensure a non-hazardous operation, the alternating current from the socket is converted in „low-voltage current“ (direct current, DC) by means of an integrated rectifier and an output voltage of 24 V is output. The main adapter respectively the charging unit also features a protective circuit which prevents malfunctions due to surge voltages and damages to the unit.

Note: The warranty claim will be invalidated if the device is connected incorrectly. Please also pay attention to a proper routing of the mains cable. The drive system is designed for alternating voltage.



Safety notes

The construction of the piece of furniture as well as the used materials ensure that it may be used without causing risks to the user when used as intended and in compliance with the present operating instructions.

All service, maintenance and repair operations shall only be carried out and documented by authorized persons. If it is necessary to disassemble individual safety devices during e.g. service or repair operations, then it is required to perform the re-establishment and examination of the effectiveness of all safety devices immediately upon completion of the operations.

Technical data – for all armchairs with seat adjustment

Motors

www.limoss.de

Device type	MD 125
Mains connection (VAC)	100 - 240 V AC
Motor voltage	18 - 35 V DC
Protection type	IP X4
Continuous operation / pause cycles	2 min. / 18 min.

Caution: It is prohibited to put safety devices and/or guards out of operation respectively to remove them! The motor cover must not be removed!



Accumulator

www.limoss.de

Device type	MC 166
Protection type	IP X6
Accumulator capacity	approx. 50 Cycles / ø 21 days
Charging of the accumulator	by means of separate charging adapter
Life cycle	80% capacity after 300 charging cycles (depending on use and environment)

Do not dispose of the accumulator in the domestic waste!



Technical data – for all armchairs with seat adjustment

Notes: Before first operation, please charge the accumulator completely (8 hours). The charging and adjusting is possible at the same time. Recharge the accumulator after 3 months at the latest because otherwise the capacity will suffer. As soon as the critical accumulator capacity is reached, an acoustic alarm signal will sound when the function is activated. Immediately charge the accumulator.



The optimal performance of the accumulator is only ensured at normal room temperature (20° to 30° C).

Accumulators, batteries, electric motors, manual switches etc. belong to the wear and tear parts of a model. They are subject to a continuous loss of performance that differs depending on the intensity of the use (or application respectively purpose). Their lifetime is therefore limited by their very nature. This is part of the normal wear and tear of the parts and does not constitute any valid cause for complaint. If, however, a complaint occurs within the first six months after purchase, it is assumed that a material defect existed already at the beginning. In such cases, we will replace the respective wear and/or tear part.

For wear and tear parts, we herewith provide all pieces of information, among other things regarding charging, connection, operation or storage in order to ensure a proper use. Please understand that failure to follow the instructions and incorrect handling will make claims under warranty null and void for those parts.

Charging adapter / power supply

www.limoss.de

Device type	MC 125
Protection class	IP 26
Input	100 - 240 V AC 50/60 Hz 1.6-0.7 A
Output	29 V DC 2.0 A



Note: Our charging adapters / power supply units have **protection class IP26**. According to certification, this protection class offers protection against water jets. However, we recommend storing the charging adapters / power supply units indoors when not in use. There is no protection against temporary / permanent immersion in water or other liquids.



Bullfrog
Marketing & Design GmbH

Landwehrstr. 32
96247 Michelau
Germany

declares for the following programme:

OD0318 Baboo, types with motor-driven adjustment

the compliance and the equivalent with the EC guidelines:

EC machinery directive	2006/42/EG
EC low-voltage directive	2006/95/EG
other used standards	EN 60335-1 EN 55014-1 EN 55014-2 Kat II EN 61000-3-2/-3-3

Authorized representative of documents: Jan Beier
Landwehrstr. 32
96247 Michelau
Germany

It is certified herewith, that the above-mentioned products correspond to the mentioned EC guidelines

Michelau, October 2018



Jan Beier, director of Bullfrog Marketing & Design GmbH